

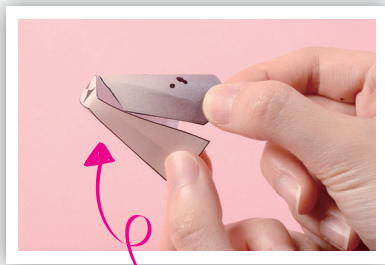
製作小海豹

工具：剪刀、漿糊筆



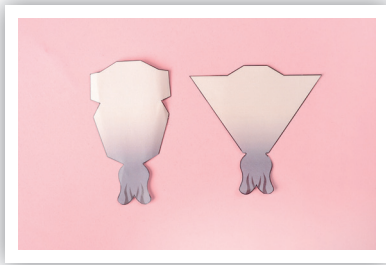
先把各部分剪出來，虛線部分不要剪，留作接合用。

1 製作頭部



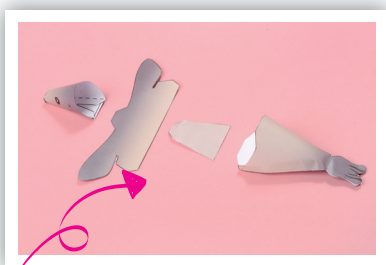
鼻子下長條與兩邊黏合

2 製作尾部



把尾部兩旁互相黏合

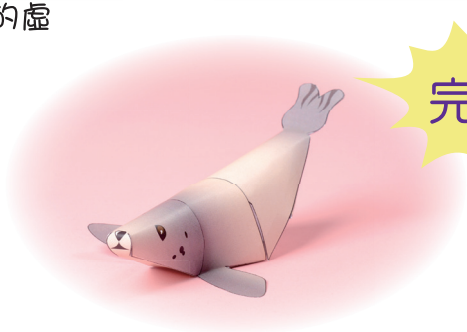
3 把各部分組合起來



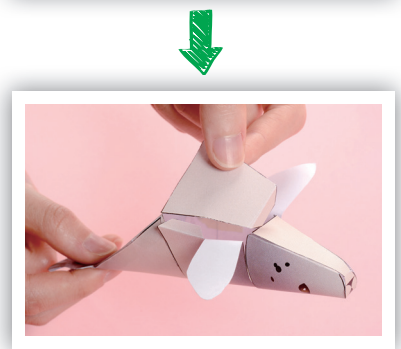
按此次序把各部分的虛線接合位黏合起來

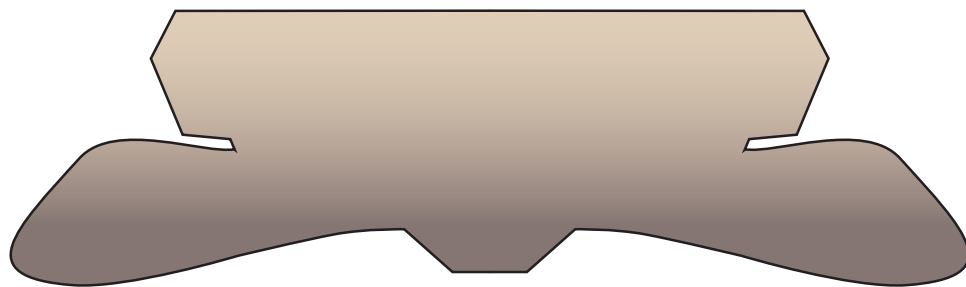


好像在動呢！



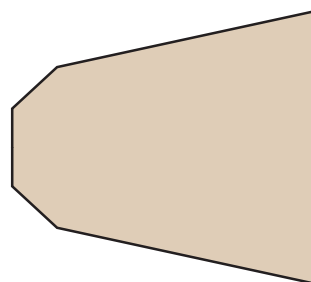
完成圖



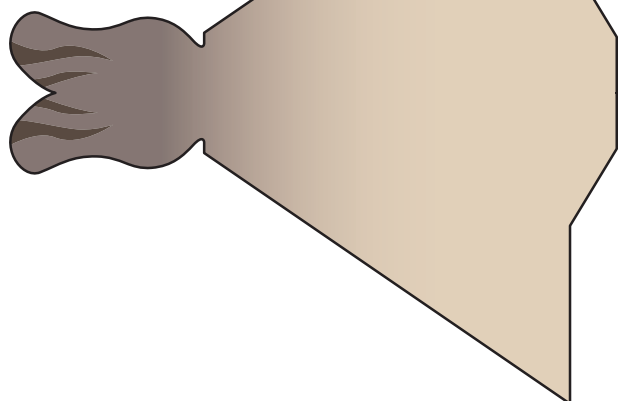


身軀(面)

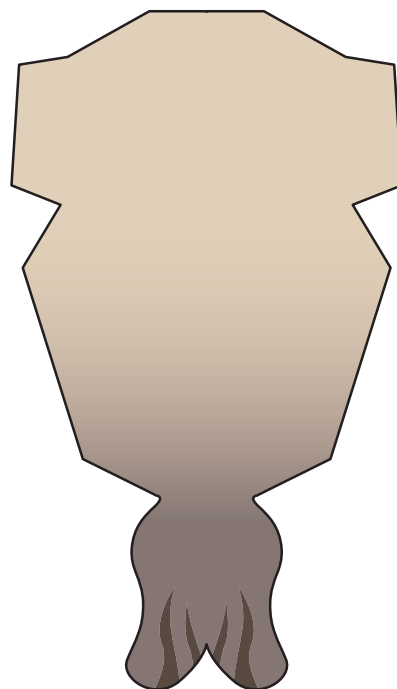
身軀(底)



尾部①



尾部②



頭部

